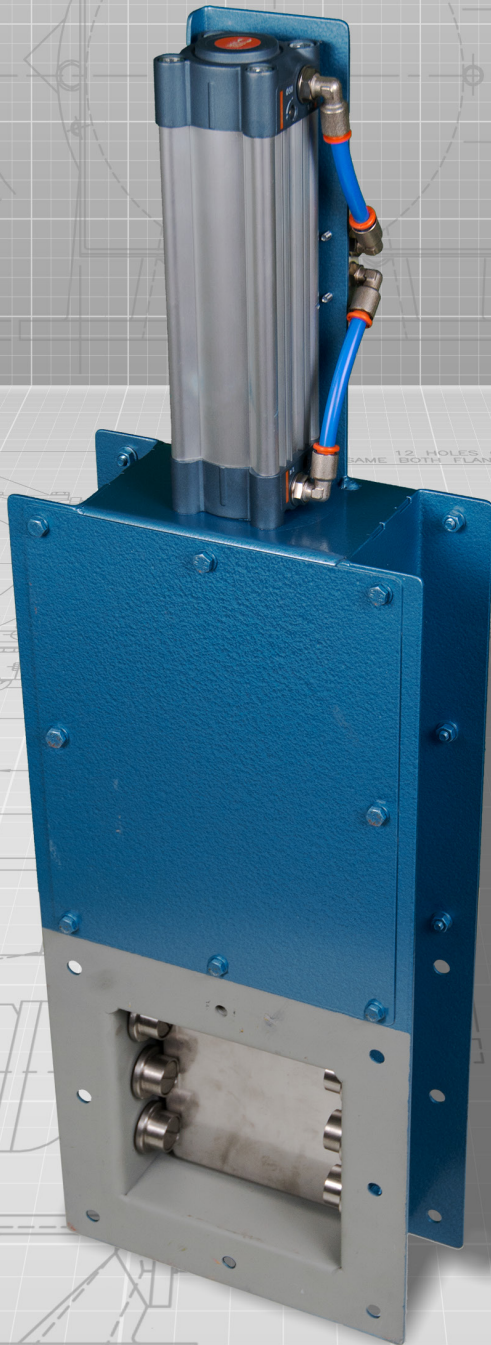


**ROTOLOK**

everything under control...



FABRICATED SLIDE VALVES

**ROTOLOK UK**

1 Millennium Place  
Tiverton Business Park  
Tiverton  
Devon  
EX16 6SB  
United Kingdom

Tel: +44 (0) 1884 232232  
Fax: +44 (0) 1884 232200

[www.rotolok.co.uk](http://www.rotolok.co.uk)  
[sales@rotolok.co.uk](mailto:sales@rotolok.co.uk)



## INTRODUCTION

The Rotolok industrial range of slide valves are simply, but robustly, designed to handle powders, pellets and granules over a wide field of applications. They may be operated manually, or by pneumatic means or electric motors, and offer reliable, continuous service with the minimum of attention and maintenance.

The standard range covers most needs, but the basic designs are capable of fabrication to any specified sizes and construction.

## IMPORTANT FEATURES

- No jamming. All slide plates run on flanged rollers.
- Minimal leakage. All valves (except enclosed valves) fitted with packing gland type seals.
- Streamlined design means unrestricted material flow.
- Available in a variety of styles to suit the application with options of manual, pneumatic or motorised operation.

## RANGE

Wide standard range of manual, motorised, pneumatic versions, suitable for all usual powder handling applications.

With our standard sizes ranging between 150mm and 420mm, we are able to fabricate slide valves to suit your application. We can also fabricate special sizes if requested.

## SPECIFICATION

### Body

Mild or Stainless Steel from 3mm plate

### Slide Plates

Mild or Stainless Steel

### Hand Wheel and Chain Wheel

Rack and Pinion

### Solenoid Valves

Five port two way single solenoid spring return

### Limit Switches

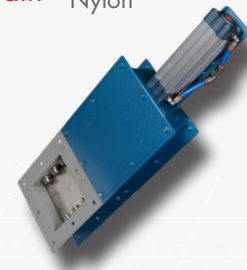
Micro switches to IP55

### Motors

1/8hp TEFC motor with torque limiter to prevent overload

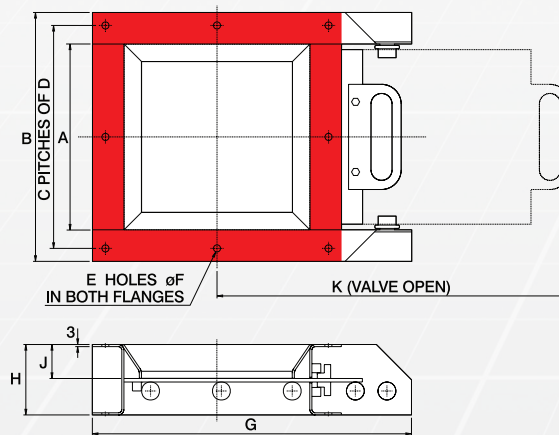
### Rollers

Flanged MS oilite bushes or Nylon



## MANUAL SQUARE SLIDE

The basic model in the range, designed for straightforward, easy push-pull manual operation.



All dimensions are in millimetres

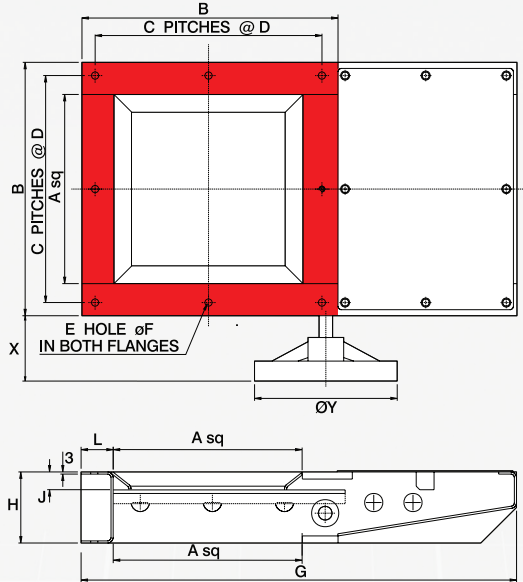
SIZE	A	B	C	D	E	F	G	H	J	K
150	150	240	2	100	8	10	348	100	48	330
165	165	255	2	108	8	10	363	100	48	353
200	206	293	2	125	8	10	400	100	48	405
215	215	305	2	133	8	10	413	100	48	428
250	254	344	2	149	8	12	440	100	48	488
265	265	355	2	159	8	10	455	100	48	503
300	300	390	4	87	16	12	485	100	48	595
320	320	410	4	92	16	12	518	100	48	585
350	350	440	4	100	16	12	535	100	48	630
370	370	460	4	105	16	12	568	100	48	660
400	400	490	4	113	16	12	600	100	48	706
420	420	510	3	156	12	18	617	100	48	742

Dimensions are approximate and subject to change without notice  
 Planning-in detail for general guidance only  
 (To cover safety aspects ask for our safety leaflets)  
 Drillings are Rotolok standards. Variations can be made.



## RACK AND PINION SQUARE SLIDE

Provides a finer degree of manual control for metering, etc. Fitted with handwheel on a c hainwheel for operating at varying heights above floor level.



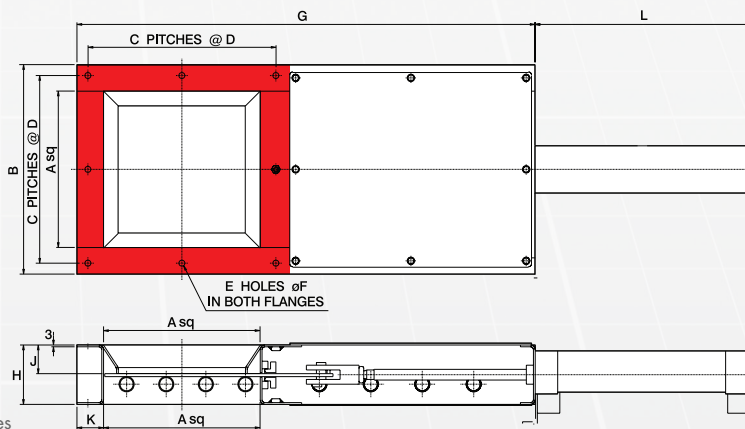
SIZE	A	B	C	D	E	F
165	165	255	2	108	8	10
200	203	293	2	125	8	10
215	215	305	2	133	8	10
250	254	344	2	149	8	10
265	265	355	2	159	8	10
300	300	390	4	87	16	12
320	320	410	4	92	16	12
350	350	440	4	100	16	12
370	370	460	4	105	16	12
400	400	490	4	113	16	12
420	420	510	4	118	16	12

SIZE	G	H	J	L	X	Y
165	406	100	25	45	92	200
200	477	100	25	45	92	200
215	501	100	25	45	92	200
250	580	100	25	45	92	200
265	610	100	25	45	92	200
300	671	100	25	45	92	200
320	711	100	25	45	92	200
350	765	100	25	45	92	200
370	820	100	25	45	92	200
400	865	100	25	45	92	200
420	915	100	25	45	92	200

All dimensions are in millimetres

## SINGLE PNEUMATIC SQUARE SLIDE

Also based on the standard manual valve but fitted with one cylinder for medium duty application.



All dimensions are in millimetres

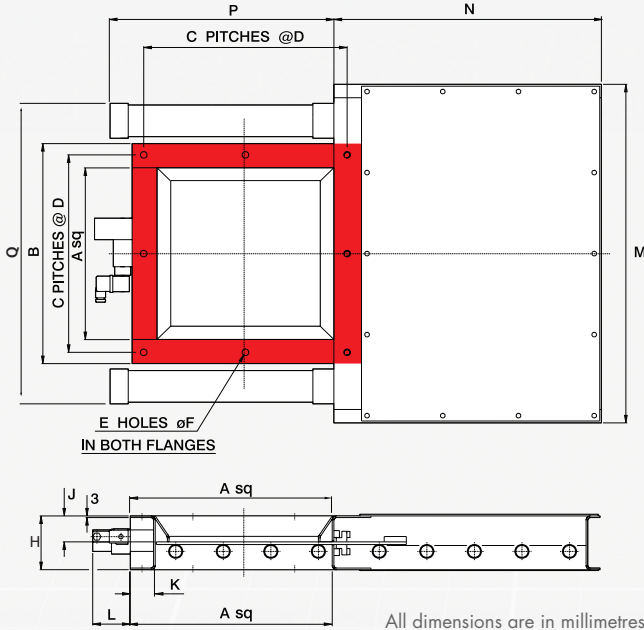
SIZE	A	B	C	D	E	F	G	H	J	K	L
150	152	242	2	100	8	10	530	100	48	45	240
165	165	255	2	108	8	10	543	100	48	45	240
200	203	293	2	125	8	10	610	100	48	45	265
215	215	305	2	133	8	10	668	100	48	45	315
250	254	344	2	149	8	10	707	100	48	45	315
265	265	355	2	159	8	10	775	100	48	45	365
300	300	390	4	86	16	12	802	100	48	45	380
320	320	410	4	92	16	12	873	100	48	45	430
350	350	440	4	100	16	12	897	100	48	45	450
370	370	460	4	105	16	12	931	100	48	45	450
400	400	490	4	113	16	12	997	100	48	45	480
420	420	510	4	118	16	12	1072	100	48	45	530

Dimensions are approximate and subject to change without notice  
Planning-in detail for general guidance only  
(To cover safety aspects ask for our safety leaflets)  
Drillings are Rotolok standards. Variations can be made.



## DOUBLE PNEUMATIC SQUARE SLIDE

Based on the standard manual valve and fitted with two double acting cylinders and one two way solenoid valve and limit switches. Compact and robust design of enclosed construction.



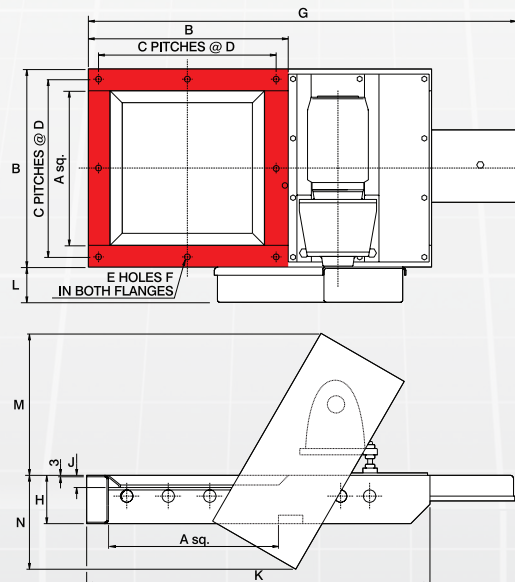
All dimensions are in millimetres

SIZE	A	B	C	D	E	F	H
150	150	240	2	100	8	10	100
165	165	255	2	108	8	10	100
200	203	293	2	125	8	10	100
215	215	305	2	133	8	10	100
250	254	344	2	149	8	10	100
265	265	355	2	159	8	10	100
300	300	390	4	87	16	12	100
320	320	410	4	92	16	12	100
350	350	440	4	100	16	12	100
370	370	460	4	105	16	12	100
400	400	490	4	113	16	12	100
420	420	510	4	118	16	12	100

SIZE	J	K	L	M	N	P	Q
150	48	45	140	460	310	235	390
165	48	45	140	461	305	235	405
200	48	45	140	525	335	260	450
215	48	45	140	516	382	310	440
250	48	45	140	570	382	310	494
265	48	45	140	570	435	340	495
300	48	45	140	611	432	360	540
320	48	45	140	631	484	410	560
350	48	45	140	667	504	430	596
370	48	45	140	686	502	430	610
400	48	45	140	721	532	460	640
420	48	45	140	735	582	510	660

## MOTORISED RACK AND PINION SQUARE SIDE

Essentially the same design and construction as the rack and pinion valve, but operated by an electric geared motor.



All dimensions are in millimetres

SIZE	A	B	C	D	E	F	G	H	J	K	L	M	N
300	305	440	3	128	8	18	880	100	25	704	82	285	197

Dimensions are approximate and subject to change without notice  
Planning-in detail for general guidance only  
(To cover safety aspects ask for our safety leaflets)  
Drillings are Rotolok standards. Variations can be made.

