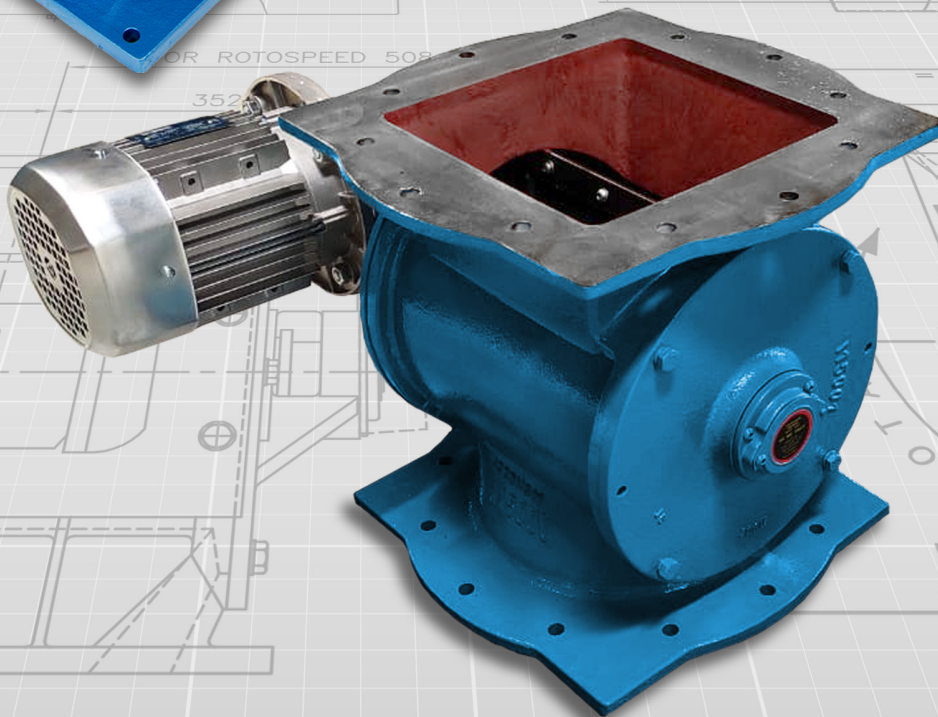
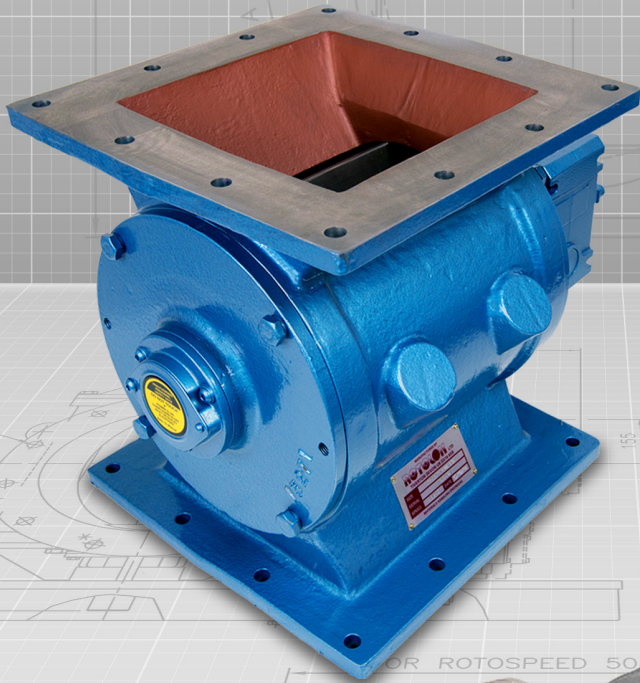


**ROTOLOK**

everything under control...



DUST COLLECTOR VALVES - RDV

**ROTOLOK UK**

1 Millennium Place  
Tiverton Business Park  
Tiverton  
Devon  
EX16 6SB  
United Kingdom

Tel: +44 (0) 1884 232232  
Fax: +44 (0) 1884 232200

[www.rotolok.co.uk](http://www.rotolok.co.uk)  
[sales@rotolok.co.uk](mailto:sales@rotolok.co.uk)



## INTRODUCTION

The Dust Collector Valve is designed specifically for lighter duty applications, such as gravity flow or bottom of dust collectors handling light loads and non-abrasive products. These units have direct drive right angle gearboxes, inboard bearings and lip seals; making them very cost competitive.

These dust collector valves have been engineered and designed as a low cost solution for Cyclone, Bag House and Gravity Feed applications with pressures around +/- 3 psi.

## SPECIFICATION

### BODIES

Cast Iron Precision Bored.  
Standard: Universal flanges to match Square or Circular connections.  
Heavy Duty: Robust with either Square or Circular flanges.

### END COVERS

Cast Iron Precision Machined and Spigot Located into Valve Body

### ROTOR

Fabricated Mild Steel Closed Tip (Shrouded) Type Fully Machined

### BEARINGS

Ball Type Rugged Inboard Sealed for Life

### SHAFT SEAL

Rubber Lip Seal

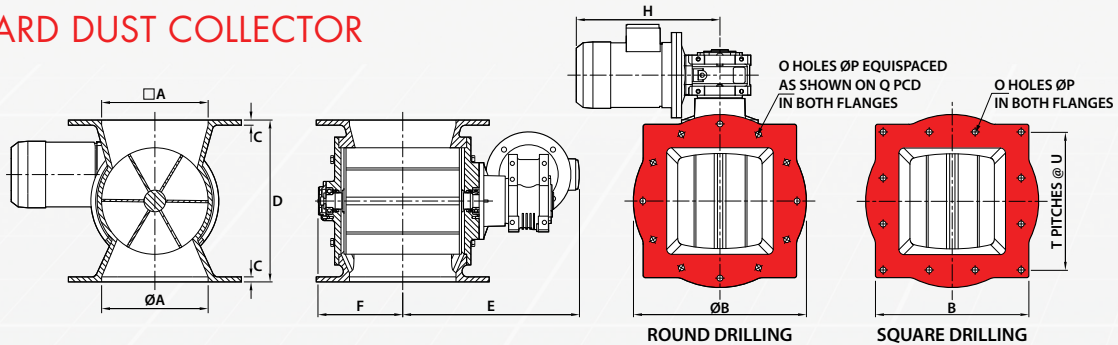
### DRIVE

Motorised Worm Box Shaft Mounted on Rotor and Fitted with Standard IEC Motor TEFC 3PH/50Hz Flange Mounted to Worm Box

### VALVE SPEED

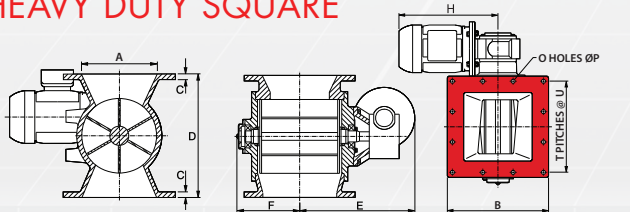
Standard - 28 RPM with 50Hz supply  
Heavy Duty - 23 RPM with 50Hz supply

## STANDARD DUST COLLECTOR



SIZE	ROUND DRILLING										SQUARE DRILLING					All dimensions are in mm		
	A	C	D	E	F	H	B	O	P	Q	B	O	P	T	U	kW	Weight (kg)	lir/rev
150	150	10	250	317	139	289	285	8	22	241	250	12	12	3	70	0.37	40	2.2
200	200	12	310	347	169	289	343	8	22	298	300	12	12	3	90	0.37	60	6
250	250	12	380	415	199	337	406	12	25	362	360	12	14	3	108	0.55	92	12
300	300	14	465	445	229	337	485	12	25	432	440	12	18	3	128	0.55	144	21

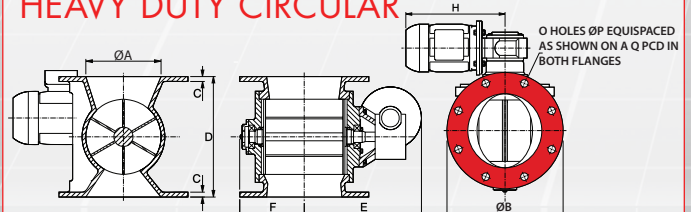
## HEAVY DUTY SQUARE



All dimensions are in mm

SIZE	A	B	C	D	E	F	H	O	P	T	U	kW	Weight (kg)	lir/rev
150	152	250	12	280	296	146	356	12	12	3	70	0.37	69	2.2
200	203	300	12	330	320	172	356	12	12	3	90	0.37	83	6
250	254	370	18	390	350	204	382	12	18	3	108	0.55	116	12
300	305	440	18	465	388	235	382	12	18	3	128	0.55	175	21

## HEAVY DUTY CIRCULAR



All dimensions are in mm

SIZE	A	B	C	D	E	F	H	O	P	Q	kW	Weight (kg)	lir/rev
150	154	285	12	270	296	146	356	8	22	241	0.37	69	2.2
200	203	320	12	310	320	172	356	8	18	280	0.37	83	6
250	254	368	15	380	350	204	382	8	18	320	0.55	116	12
300	305	440	19	465	388	235	382	12	22	395	0.55	175	21

Dimensions are approximate and subject to change without notice  
Planning-in detail for general guidance only  
(To cover safety aspects ask for our safety leaflets)  
Drillings are Rotolok standards. Variations can be made.

